



CAMINO

C O R P O R A T I O N

CAMINOCORP.COM

TSX.V : COR | OTCQB : CAMZF | WKN: A116E1

JULY 2024

Cautionary Notes and Forward-Looking Statements

This document has been prepared by Camino Minerals Corporation (the “**Company**”) for evaluation of the Company by the recipient. The information contained in this presentation is derived from estimates made by the Company, information that has been provided to the Company by other parties, and otherwise publicly available information concerning the Company and does not purport to be all-inclusive or to contain all the information that an investor may desire to have in evaluating whether or not to make an investment in the Company. It is not intended to be relied upon as advice to investors or potential investors and does not take into account the investment objectives, financial situation, or needs of any particular investor. No person has been authorized to give any information or make any representations other than those contained in this presentation and, if given and/or made, such information or representations must not be relied upon as having been so authorized. In furnishing this presentation, the Company does not undertake or agree to any obligation to provide the attendees with access to any additional information or to update this presentation or to correct any inaccuracies in, or omissions from, this presentation that may become apparent. The contents of this presentation are not to be construed as legal, financial, or tax advice. Each prospective investor should contact his, her, or its own legal adviser, independent financial adviser, or tax adviser for legal, financial, or tax advice. No securities commission or regulatory authority has reviewed the accuracy or adequacy of the information presented. This presentation is for informational purposes only and does not constitute an offer or a solicitation of an offer to purchase the securities referred to herein. The information and opinions contained in this presentation are provided as at the date of this presentation. This presentation may not be reproduced, further distributed, or published in whole or in part by any other person.

Forward Looking Statements: Certain disclosures in the June 27, 2024 Letter-of-Intent News Release constitute forward-looking information. In making the forward-looking disclosures in this release, the Company has applied certain factors and assumptions that are based on the Company’s current beliefs as well as assumptions made by and information currently available to the Company. Forward-looking information in the release includes statements with respect to the Proposed Acquisition of the Project; the completion of due diligence and negotiation of documentation by August 31, 2024 in respect of the Proposed Acquisition; the 50:50 joint venture with Nittetsu in respect of the Project and the sharing of copper off-take for the Project; the consideration payable by Nittetsu and Camino, respectively, in respect of the Proposed Acquisition; the anticipated synergies between Nittetsu and Camino in respect of the Project; and the Company’s aims, goals and growth plans. Although the Company considers these assumptions to be reasonable based on information currently available to it, they may prove to be incorrect, and the forward-looking information in this release is subject to numerous risks, uncertainties and other factors that may cause future results to differ materially from those expressed or implied in such forward-looking information. Such risk factors include, among others, risk that the Proposed Acquisition will not be completed as anticipated, or at all; risk that the Company will not be able to complete its due diligence and negotiate definitive documentation by August 31, 2024 in respect of the Proposed Acquisition; risk that the Company will not receive requisite regulatory and shareholder approvals or satisfy the customary conditions in respect of the Proposed Acquisition as anticipated, or at all; risk that the Company and Nittetsu will not be able to establish the 50:50 joint venture in respect of the Project and the sharing of copper off-take for the Project as anticipated, or at all; risk that the consideration payable by Nittetsu and Camino, respectively, in respect of the Proposed Acquisition will not be as anticipated; risk that the anticipated synergies between Nittetsu and Camino in respect of the Project will not be realized as contemplated, or at all; risk that actual results of the Company’s exploration activities may be different than those expected by management; risk that the Company may be unable to obtain or will experience delays in obtaining any required authorizations and approvals; and risks related to the state of equity and commodity markets. Readers are cautioned not to place undue reliance on forward-looking statements. The Company does not intend, and expressly disclaims any intention or obligation to, update or revise any forward-looking statements whether as a result of new information, future events or otherwise, except as required by law.

This presentation includes market and industry data which was obtained from various publicly available sources and other sources believed by the Company to be true. Although the Company believes it to be reliable, the Company has not independently verified any of the data from third party sources referred to in this presentation or analyzed or verified the underlying reports relied upon or referred to by such sources, or ascertained the underlying assumptions relied upon by such sources. The Company does not make any representation as to the accuracy of such information.

For further details about the Los Chapitos Project, a National Instrument 43-101 – Standards of Disclosure for Mineral Projects (“**NI 43-101**”) technical report entitled “43-101 Technical Report on the Los Chapitos Property, Arequipa Province, Peru” is available on SEDAR and the Company’s website. For further details about the Plata Dorada Project, a NI 43-101 technical report entitled “Technical Report on the Plata Dorada Project, Province of Quispicanchi, Department of Cuzco, Peru” is available on the Company’s website. Further details about the Maria Cecilia Project, including assumptions, parameters, risks, and a description of the QA/QC processes, will be set out in a NI 43-101 technical report to be filed by the Company upon completion of its acquisition of MMC, as set out in the Company’s news release dated March 30, 2021, or as otherwise required by NI 43-101 timelines. For readers to fully understand the information in this presentation, they should read each of the aforementioned Technical Reports in their entirety, including all qualifications, assumptions, and exclusions. The Technical Reports are intended to be read as a whole, and sections should not be read or relied upon out of context.

Jose Bassan MAusIMM (CP) 227922, MSc. Geologist, a Qualified Person as defined by NI 43-101, has reviewed and approved the technical contents of this document. Mr. Bassan has reviewed and verified relevant data supporting the technical disclosure, including sampling and analytical test data.

CAMINO AWARDED EXCLUSIVITY TO COMPLETE DUE DILIGENCE AND FINALIZE THE ACQUISITION OF THE CONSTRUCTION-READY PUQUIOS PROJECT IN CHILE

Right Project – Right Location – Right Partner

Camino Extending Existing Partnership With Nittetsu Mining To Acquire The Property As A 50:50 Joint Venture

Potential Acquisition A Significant Step In Building A Copper Company

Camino to complete due diligence and negotiate documentation by August 31, 2024.
Learn more about the proposed acquisition: [News Release June 27, 2024](#)





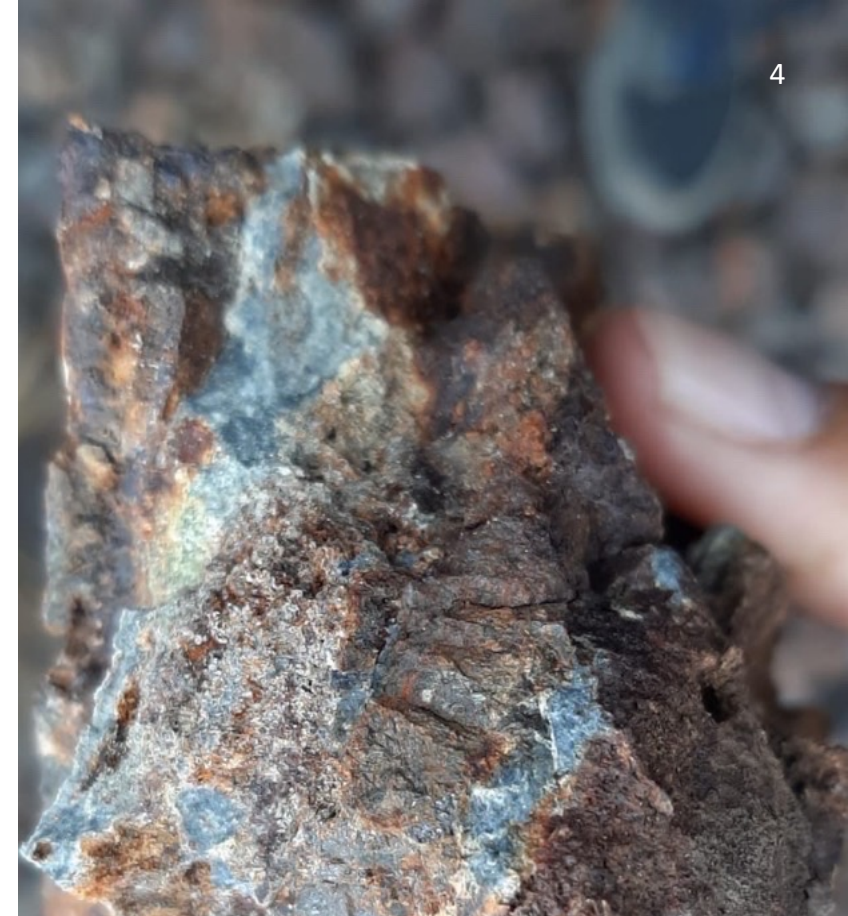
MARIA CECILIA

Existing Resource and Discovery
Drilling in a Major Porphyry System



LOS CHAPITOS

New Resource Potential and
Discovery Drilling in a Major IOCG
System




PLATA DORADA

High-Grade Vein System



LOS CHAPITOS





Nittetsu Mining Co., Ltd. is Camino's new business partner for its Los Chapitos copper exploration project.

- Camino to remain the operator of the Project.
- Off-take on commercial basis to be shared 50% by each party.
- Exploration programs to begin immediately.
- Nittetsu to incur earn-in expenditures of CAD \$9,000,000 over a 3-year period to earn a 35% project interest in the Los Chapitos Project with no accruing interest rights.
- Upon completion of the 35% interest acquisition by Nittetsu, a Joint Venture between parties will be established.

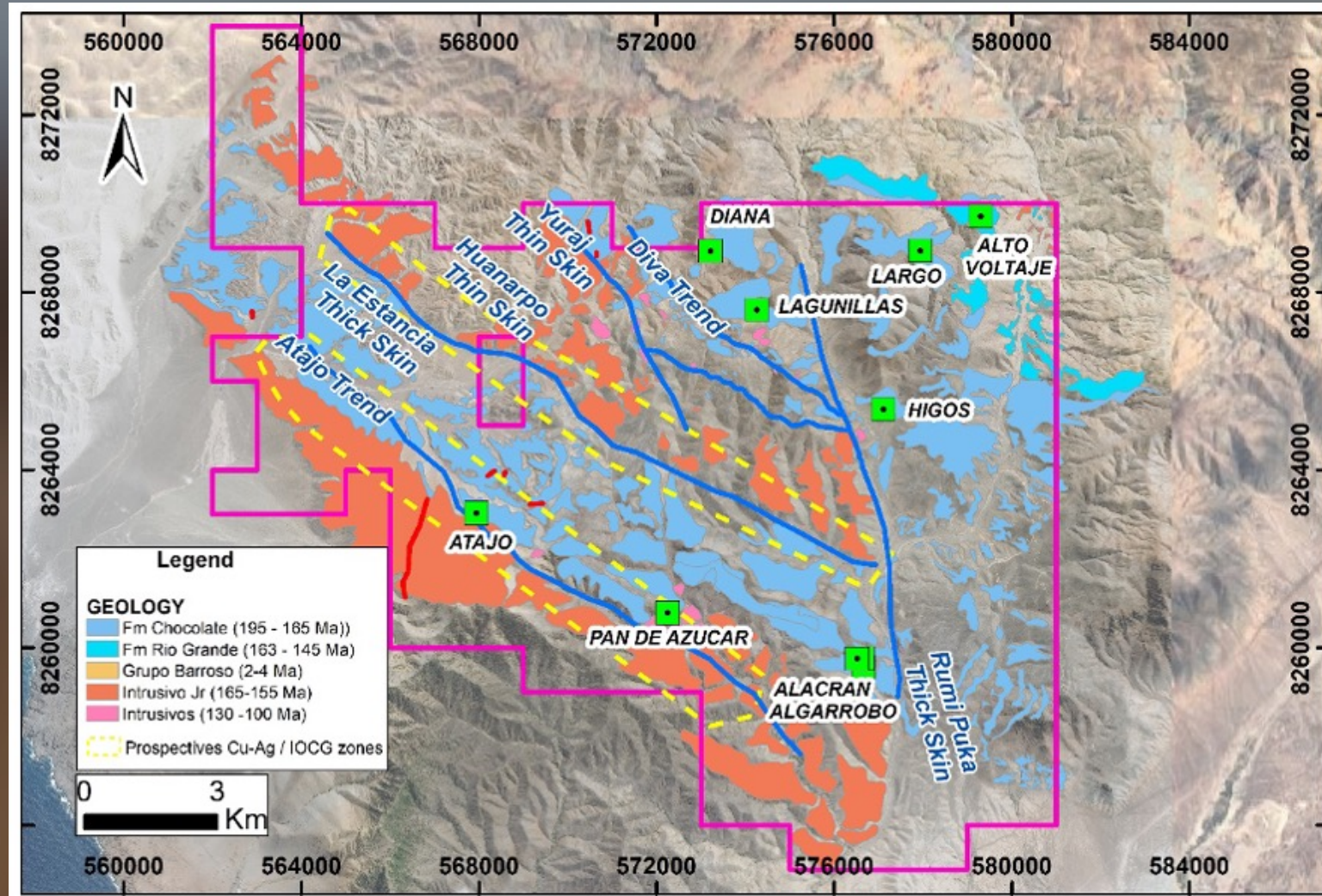
Nittetsu is a Japanese corporation listed on the Tokyo Stock Exchange with 84-year history as a mining and trading company. Nittetsu is the operator of the Atacama Kozan mine located in the prolific Candelaria-Punta del Cobre copper district which is known to host IOCG type ore deposits.



COMPARED TO CHILE, THE COPPER-RICH COAST OF PERU IS RELATIVELY UNEXPLORED

The Los Chapitos project represents a style of deposit known as IOCG (Iron Oxide-Copper-Gold) that extends down the Peruvian coast into Chile and includes such deposits as Mina Justa (Peru), Mantos Blancos (Chile), and La Candelaria (Chile). IOCG deposits are particularly attractive exploration targets due to their high grades and frequent coproduct metals (gold and silver).

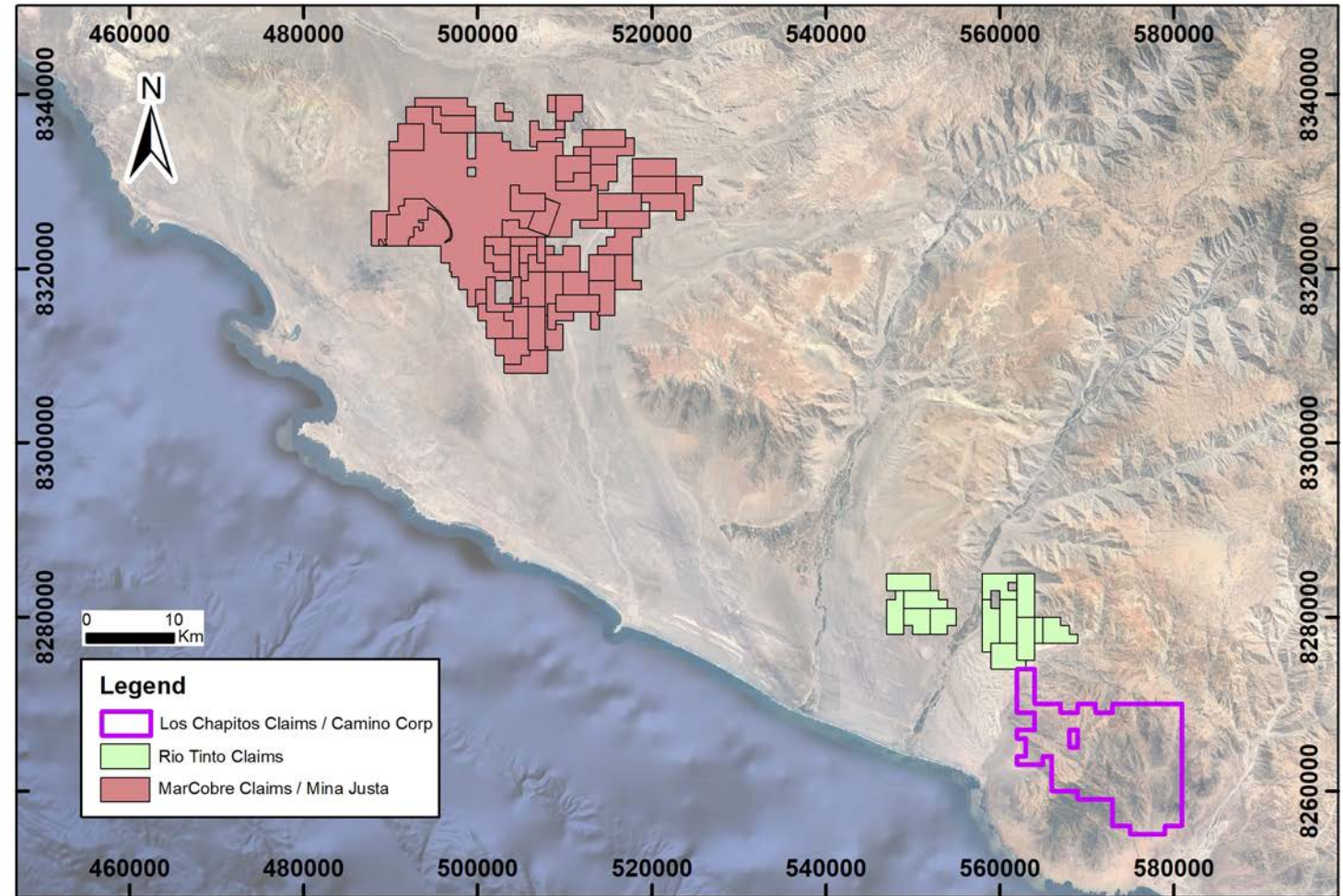
2024 EXPLORATION AND DRILLING CAMPAIGN

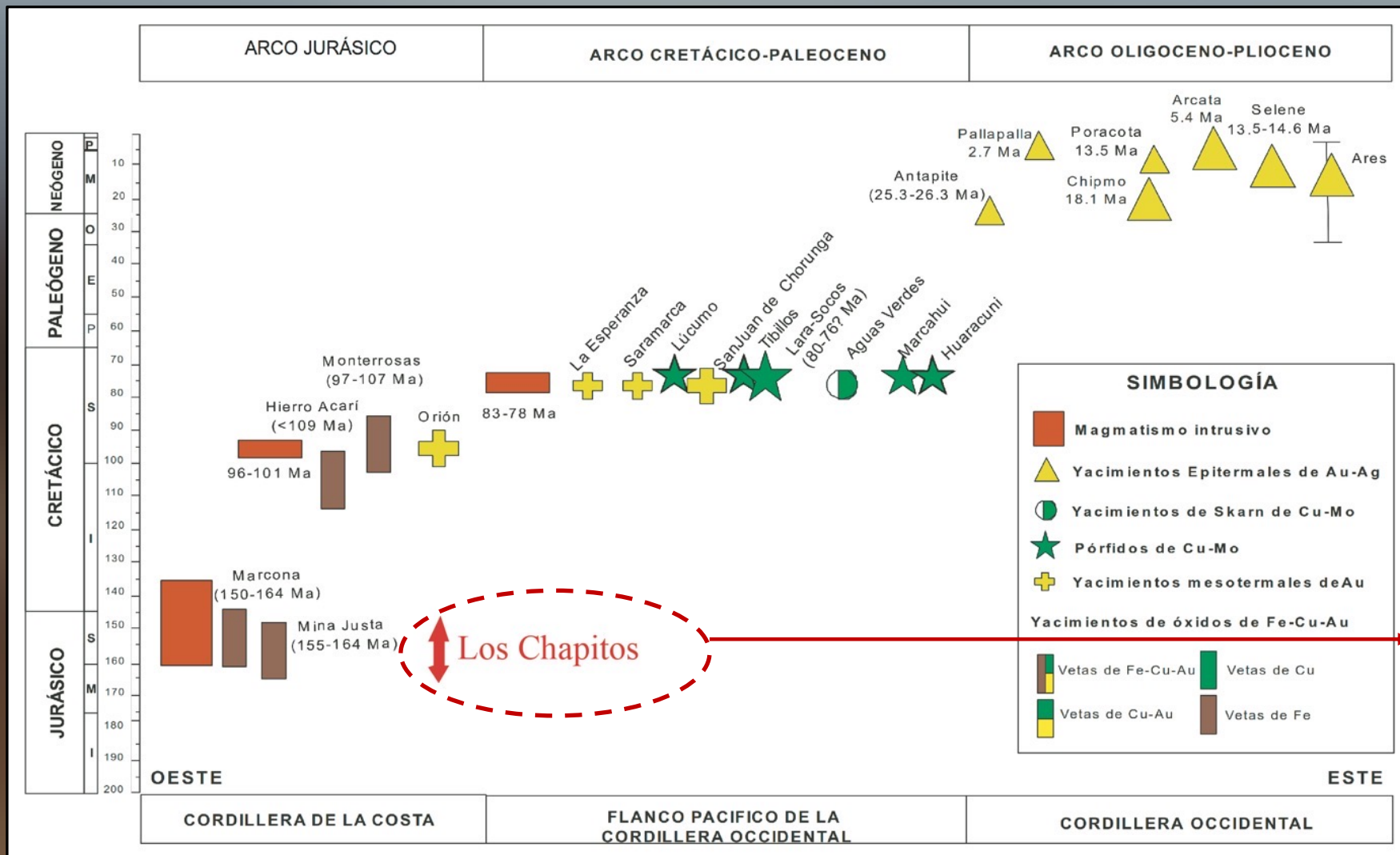


In early 2024, Camino's step-out drilling campaign explored for new zones of oxide copper mineralization with a total of 2,225.7 metres consisting of 15 drillholes to depths of ~150 metres (see news release dated April 11, 2024). Drillholes targeted new areas more than 2 km from the known copper mineralization in the Adriana copper zone. The program was designed to test for buried copper stratabound mantos located near the copper-controlling structures like the Diva Fault Trend and was successful at identifying or extending two new high-grade copper areas at the Diana and Lourdes zones.

The 2024 exploration goals are focused on the structural corridor: the Estancia fault, Lagunillas, Atajo, and the Diva trends, to understand a Riedel system, mainly in the secondary structures, where they could be enriched by copper mineralization.

RIO TINTO CLAIMS GROUND NEXT TO LOS CHAPITOS





GEOLOGICAL AGE OF LOS CHAPITOS

SIMILAR TO MARCONA AND MINA-JUSTA MINES

Intrusives:
150 – 160 Million years old.

Mineralization:
105 Million years old.

LOS CHAPITOS ADRIANA ZONE DRILLING HIGHLIGHTS



**Pad 1 to Pad 4 extend over 350m strike length of Diva Trend.
Diva Trend extends for 7 KM.**

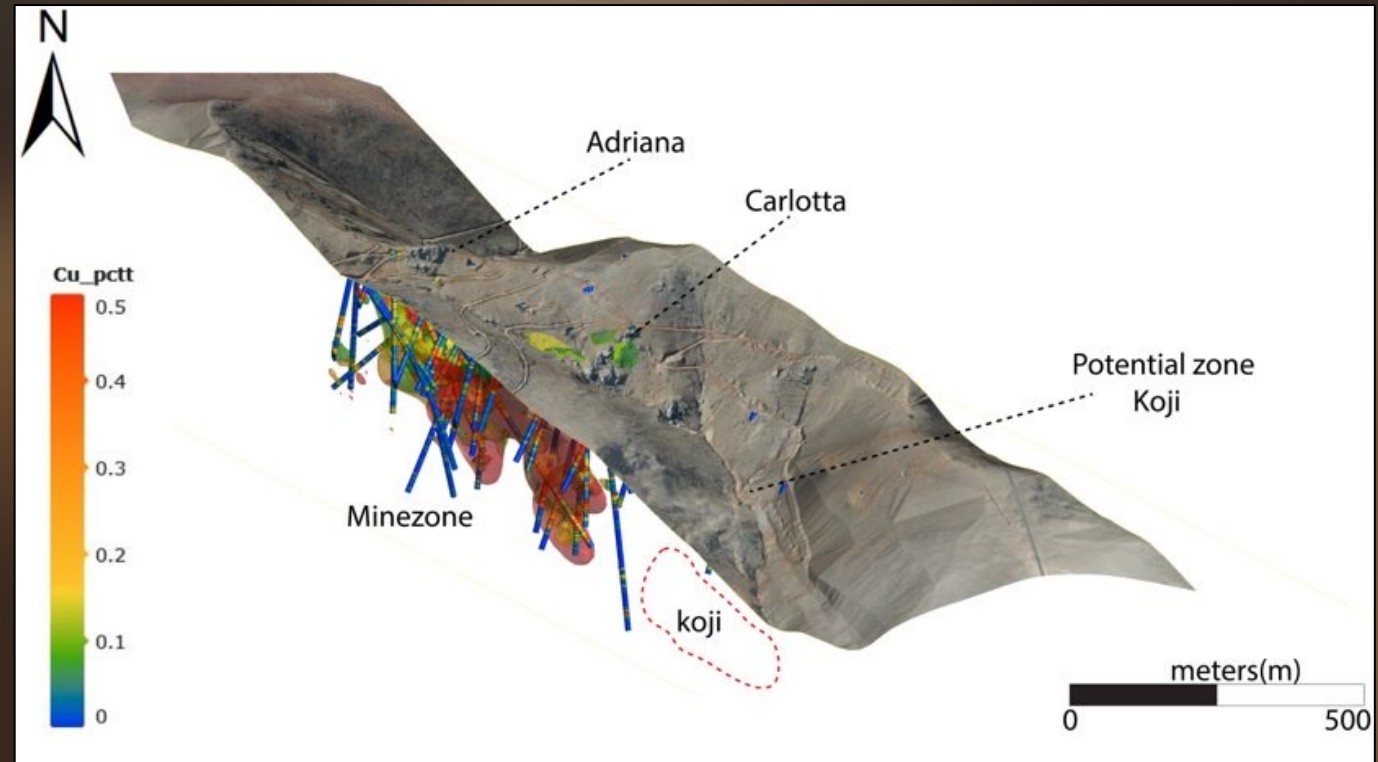
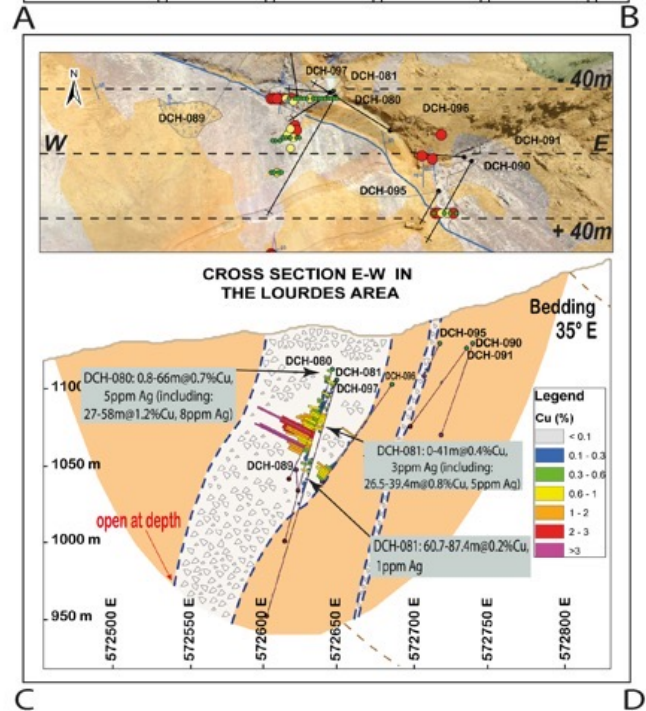
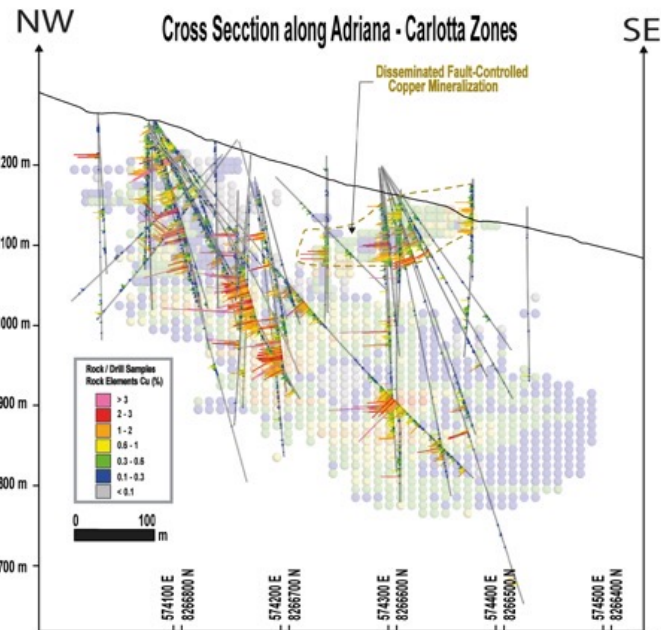
Significant copper intercept highlights (not true thickness) for Pad 1, Pad 2A and Pad 4 include:

- | | |
|------------------|--|
| DCH-001 (Pad 1) | 55.3m @ 0.73% Cu from 7.2m depth
AND 33.0 @ 0.40% from 85.5m depth
AND 55.5m @ 0.37% Cu 128.5m depth
AND (along structure) 168.5m @ 0.72% Cu
with Total Soluble Copper 89%, 70%, 73% and 64%, respectively |
| DCH-034 (Pad 1) | 95.0m @ 0.85% Cu from 63.5m depth, including 6.2m @ 3.16% Cu from 152.3m with Total Soluble Copper 88% and 95%, respectively |
| DCH-012 (Pad 2A) | 96.5m @ 0.93% Cu from 175m depth, including 4.5m @ 5.01% Cu from 245.5m with Total Soluble Copper 74% and 87%, respectively |
| DCH-036 (Pad 4) | 91.0m @ 0.76% Cu from 90m depth, including 28.5m @ 1.42% Cu from 133m with Total Soluble Copper 92% and 96%, respectively |

22,888 total meters drilled.

Source: NI 43-101 Technical Report on the Los Chapitos Property, Arequipa Province, Peru, 8,264,000 m N, 574,000 m E UTM WGS 84, Zone 18S FOR Camino Minerals Corporation By P&E Mining Consultants Inc, effective date March 19, 2018, signing date April 3, 2018.

STRATEGY TO CONNECT AND AGGREGATE ADDITIONAL COPPER OXIDE MANTOS



LOS CHAPITOS PRELIMINARY METALLURGICAL COLUMN TEST RESULTS

(SGS Minerals S.A. Santiago)



Oxide Composites to depths of approximately 300m

- 74% Cu average recoveries for composite head grade of 0.80% Cu from 3 Column Tests
- 73% to 76% Cu recoveries from Bottle Roll tests
- Preliminary acid consumption bottle/column 3.3/9.05 kg acid/kg Cu

Mixed Sulphide Composite (45% sulphide)

- Inoculated with ferro-bacillus bacteria to encourage bio-oxidation of secondary sulphides
- 59.1% Cu recoveries for composite grade of 1.57% Cu
- Preliminary acid consumption bottle/column 3.14/5.5 kg acid/kg Cu

Flotation Testing (depths of 152 to 386m)

- 85% Cu recovery producing 27% Cu concentrate from 2.22% Cu sulphide composite

Bond Work Index

- Average 19.33, 21.26 and 17.41 kwh/t for oxide, mixed and sulphide samples, respectively

Source: NI 43-101 Technical Report on the Los Chapitos Property, Arequipa Province, Peru, 8,264,000 m N, 574,000 m E UTM WGS 84, Zone 18S FOR Camino Minerals Corporation By P&E Mining Consultants Inc, effective date March 19, 2018, signing date April 3, 2018.



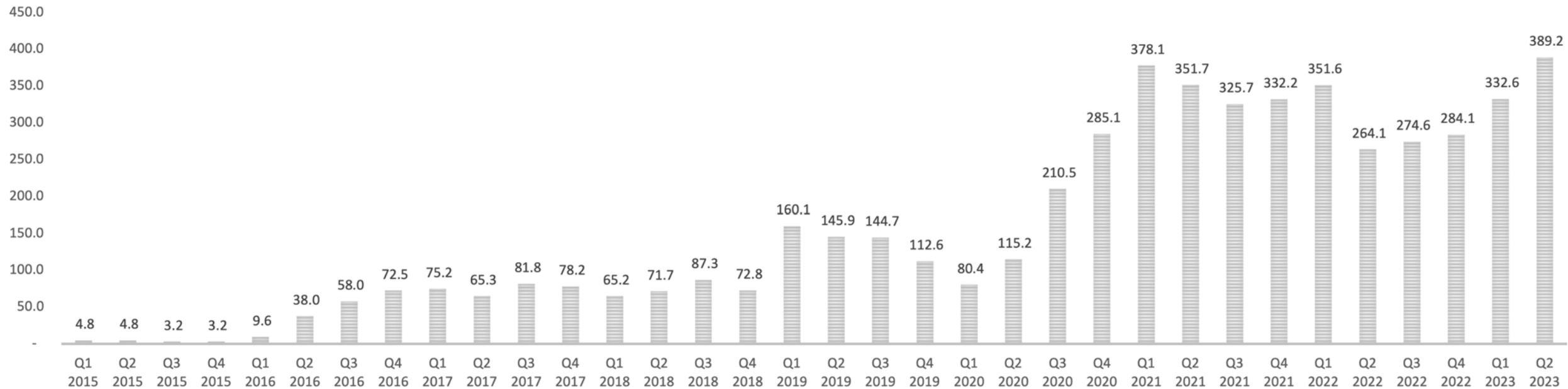
INFRASTRUCTURE TO BUILD A MINE (SIMILAR TO MARCONA AND MINA-JUSTA)

- 1. Power:**
510KV lines over the property
- 2. Water:**
seawater processing 15km to project
- 3. Access:**
40 minutes from Pan American Highway (mining and transport Town of Chala)

Case Study:

Value creation in a Copper Oxide system – Marimaca Copper

MARIMACA COPPER CORP (TSX: MARI) MARKET CAPITALIZATION - CAD\$M



Nora Plant Begins Operations,
Marimaca Processing Plant Acquired
RC @ Marimaca is 16 holes:
200m @ 0.71%, 150m @ 1.13%

Land positions signed
- 43,000m PEA drill
program commences

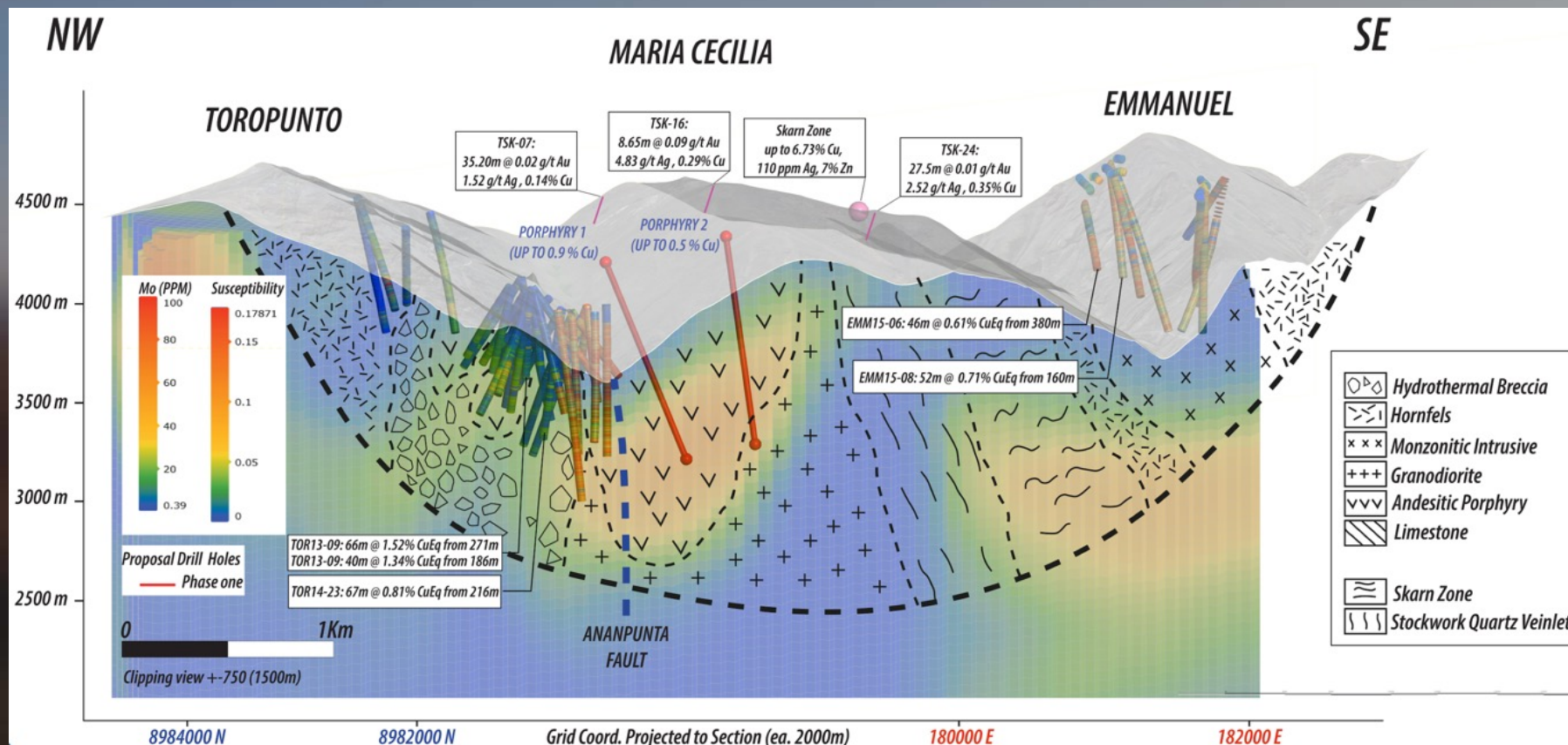
PEA Resource Update
- 70mt M&I @ 0.6% Cu
- 40mt Inf @0.52%

Resource Update
- 140mt M&I @ 0.48% Cu
- 83mt Inf @0.39%
- Sulphides identified

MARIA CECILIA



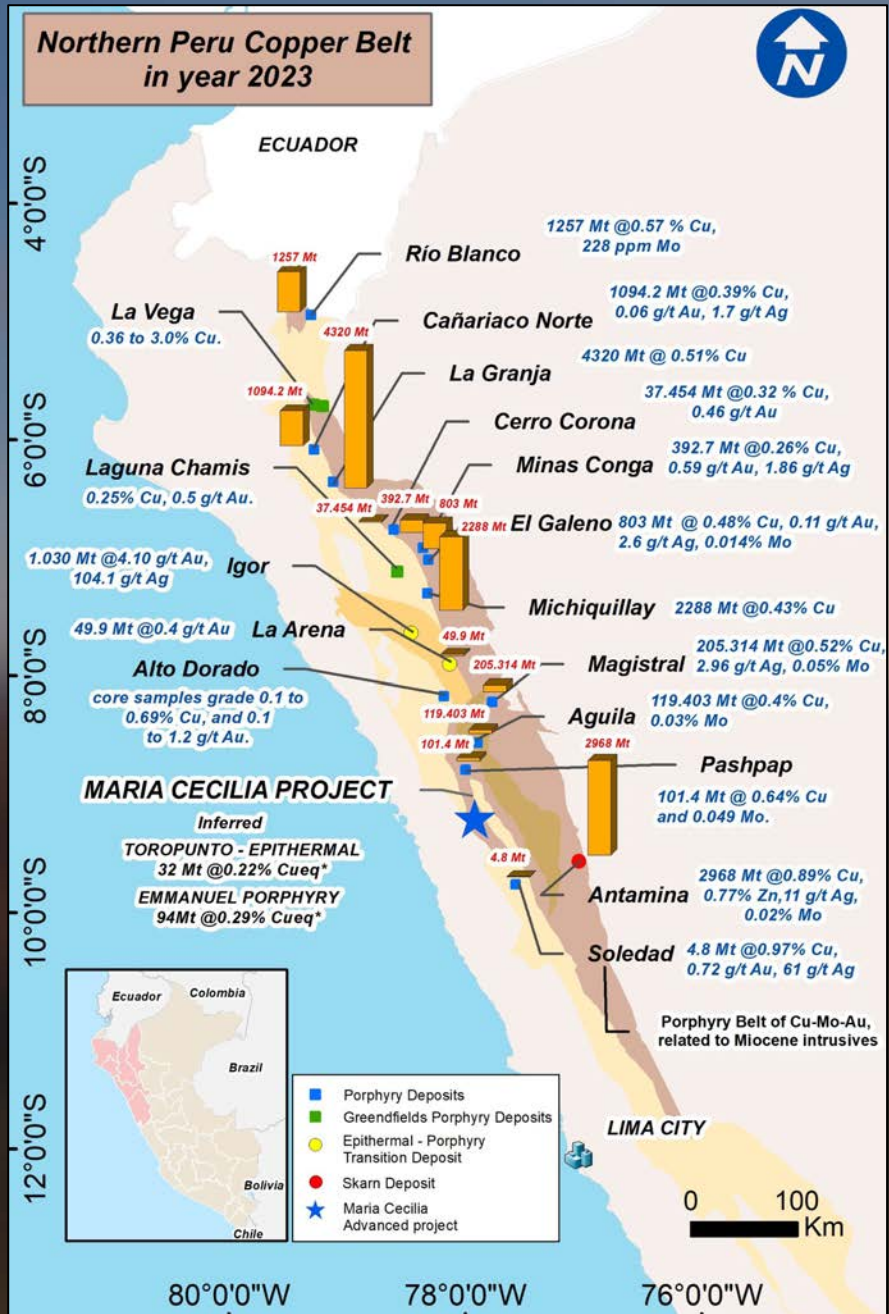
THE INAUGURAL DRILLING CAMPAIGN AT MARIA CECILIA COMMENCED ON JUNE 1, 2024



The goal of the drilling campaign is to confirm the presence of primary porphyry copper mineralization, along with gold and molybdenum, at depth. In addition, mineralization may be discovered in reactive host rocks, notably the sandstone and limestones of the Goyllarisquizga group that could host large-scale concentrations of copper mineralization, within the Cordillera Negra belt.

Results are expected in late August 2024.

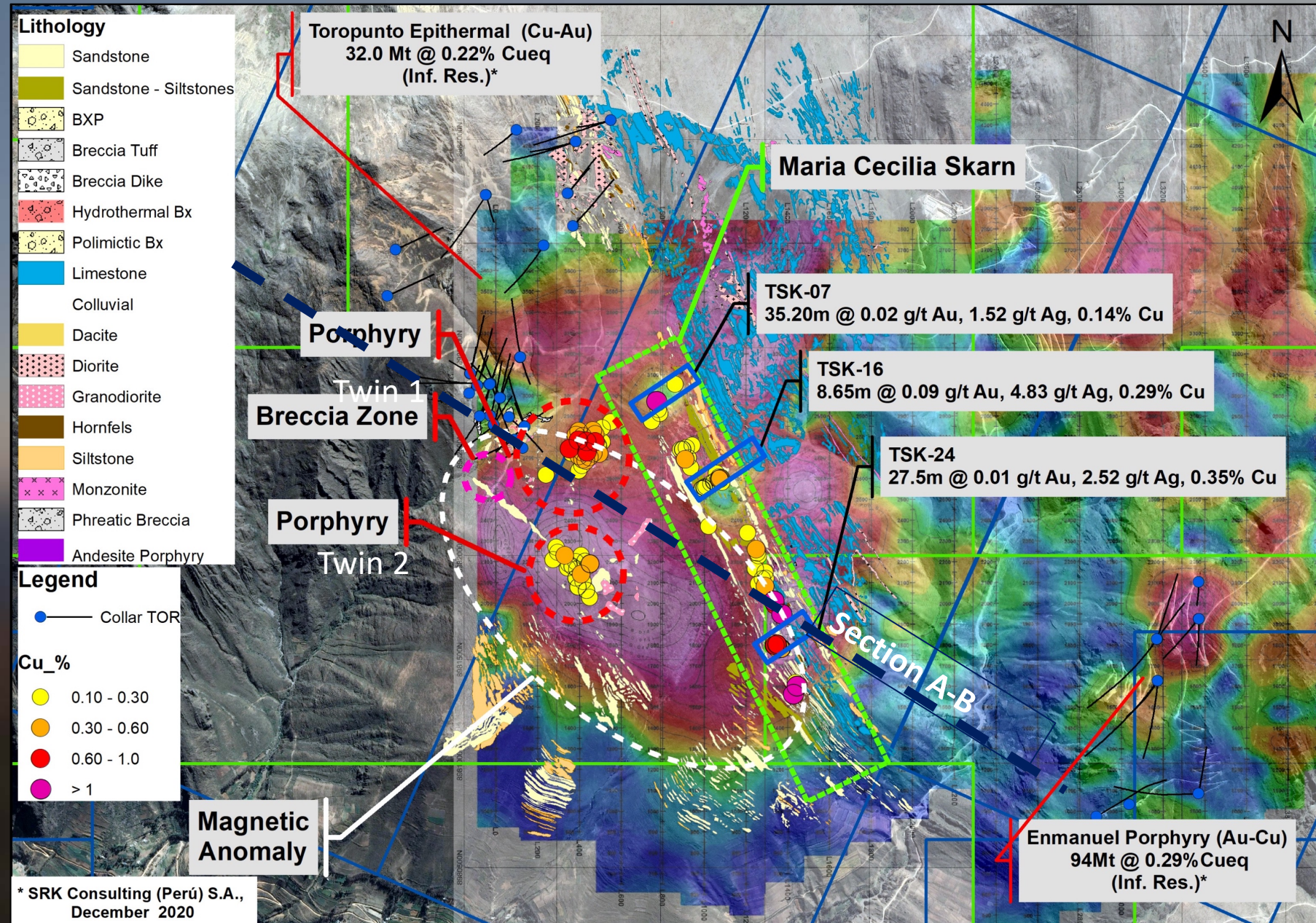
HIGH-GRADE (COPPER & GOLD) CUEQ. INTERCEPTS AND MOLYBDENUM NEXT TO MARIA CECILIA



MARIA CECILIA – MAJOR PORPHYRY SYSTEM IN A PROLIFIC COPPER BELT

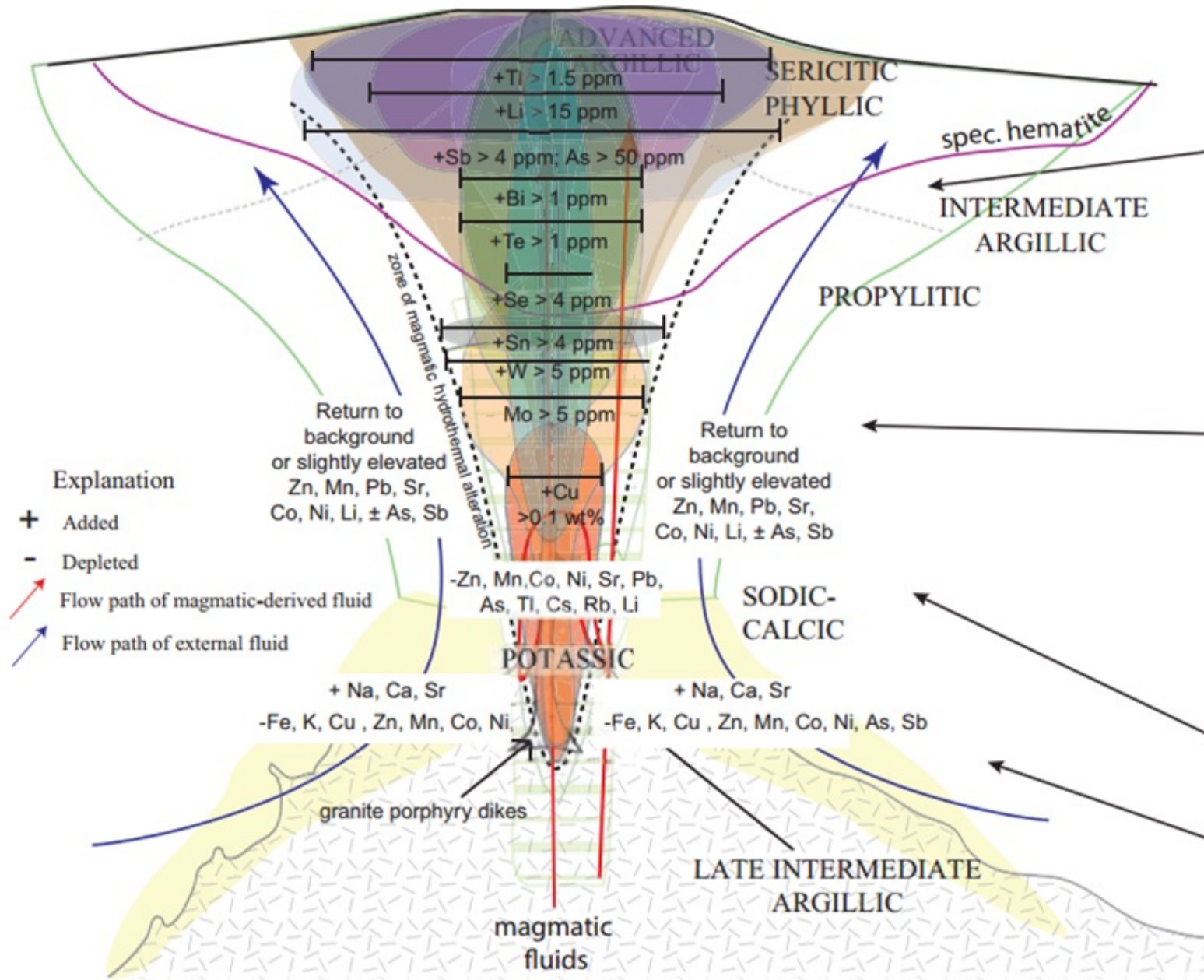
The project consists of claims that cover 7,110 hectares, and the Maria Cecilia exploration target is believed to be at the heart of the porphyry complex that includes the Toropunto Epithermal deposit and the Emmanuel Porphyry deposit. The skarn and porphyry system at Maria Cecilia is considered to have some geological similarities to one of Peru's largest copper mines, Antamina, located 100 km away.

THE MARIA CECILIA PORPHYRY COMPLEX



Geochemical Zonation Around Porphyry Copper Systems

Molybdenum, then Copper



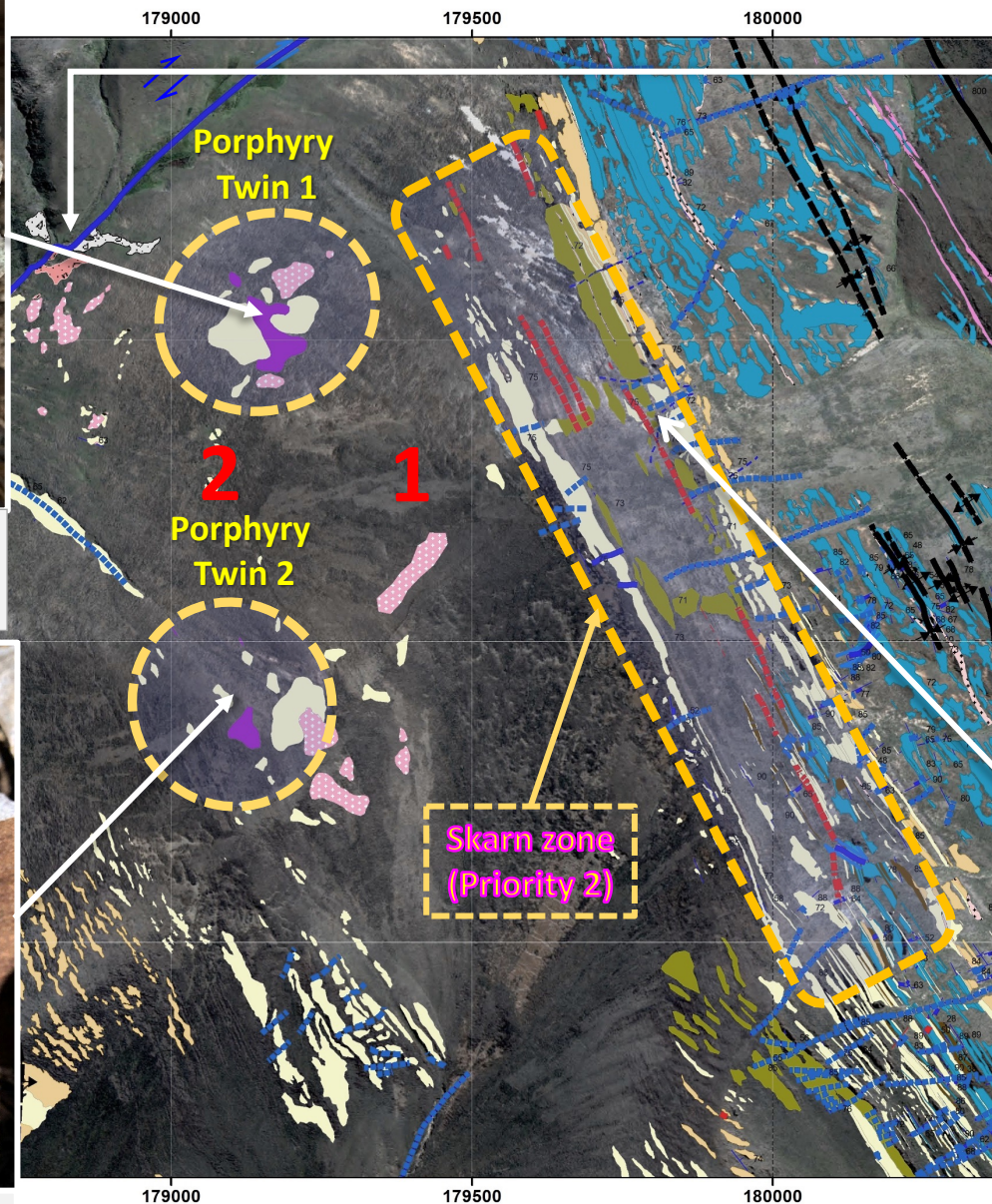
Maria Cecilia – Porphyry Complex



Andesitic porphyry with potassic alteration (biotite); quartz, A veinlets with albite cutting EDM veinlets; CuOx in fractures veinlets and disseminated



Dark rock, fine grain with stocwork, A, B, D type, biotite (weak), calcopyrite diss in parts.



Tourmaline breccia, polymictic, clasts of sandstone and granodiorite porphyry with veinlets, quartz – sericite alteration, pyrite diss and molybdenum (weak)



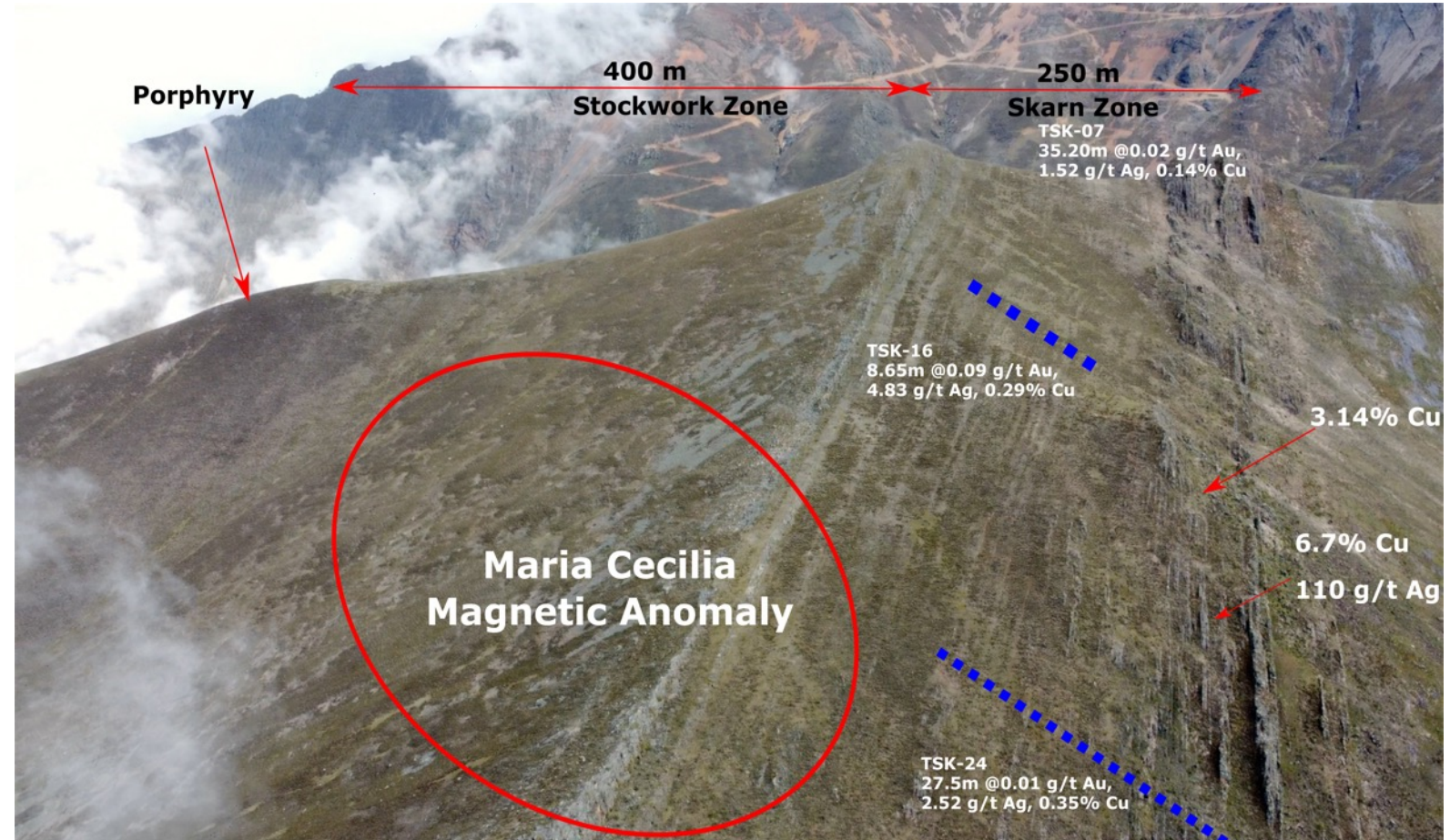
Andesite porphyry with actinolite-pyrite veinlet, also qtz milimetric veinlet, Feox in fractures; Calcopyrite in traces; 0.8 m wide, Quartz sericite alteration.

MARIA CECILIA PORPHYRY & SKARN ZONE TARGET

NW-SE 330-340° oriented strip, with an approximate length and width of 2 km by 250m;

Zone has copper anomalies that range from 500 ppm up to 6.7% Cu including 110 g/t Ag;

Chip sampling of 3 trenches returned grades up to 1.0% copper, including 27.5m @ 0.35% Cu with chalcopyrite mineralization in the southeast.



Mineral Resource Statement for Toropunto and Emmanuel projects (8.9 US\$/t NSR cut-off),
Ancash Department, Peru, SRK Consulting (Peru) S.A., December 2020

Project	Category	Tonnes (Mt)	CuEq (%)	Cu (%)	Au (g/t)	Ag (g/t)	Mo (ppm) (%)
Toropunto	Inferred	32.0	0.215	0.14	0.06	5.75	4.7
Emmanuel	Inferred	93.7	0.294	0.18	0.18	1.38	43.2

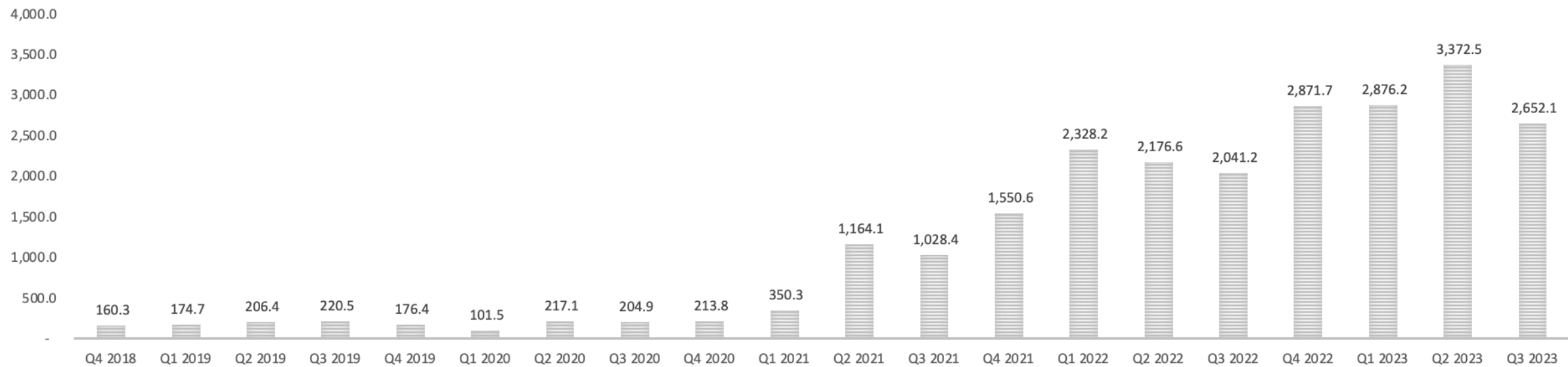
Sources: SRK

1. The Mineral Resource estimates are prepared in accordance with the "CIM Definition Standards on Mineral Resources and Mineral Reserves", adopted by the CIM Council on May 10, 2014, and the "CIM Estimation of Mineral Resources and Mineral Reserves Best Practice Guidelines".
2. Mineral Resources have an effective date of 18 December 2020. Fernando Saez, an SRK employee, is the Qualified Person responsible for the review of Mineral Resource estimate.
3. There is no certainty that all or any part of the Mineral Resources estimated will be converted into Mineral Reserves.
4. Mineral resources are reported to 8.90 US\$/t NSR cut-off.
5. Density was calculated based on each mineralized structure ranging from 2.46 t/m³ to 2.72 t/m³
6. Copper price used is US\$7,936.64/t (US\$3.60/lb.), gold price is US\$1,800/oz, silver price is US\$21.60/oz, and molybdenum price is US\$8.40/lb.
7. Toropunto Mineral Resources report for Best Case with revenue factor = 1.0 (Copper price used is US\$7,936.64/t (US\$3.60/lb), gold price is US\$1,800/oz)
8. Emmanuel Mineral Resources report for Best Case with revenue factor = 0.8 (Copper price is US\$ 6,349/t, gold price is US\$1,440/oz)
9. Assumed metallurgical recoveries: copper 87%, gold 69%, silver 80.9%, and molybdenum 85.4%
10. Assume pit slope of 44°.
11. Assumed open pit mining cost of US\$1.85/t, plant and administration cost US\$8.60/t.
12. Toropunto NSR formula: NSR (US\$/t) = 59.4974%Cu + 0.0132ppmMo+27.8432g/tAu+0.4349g/tAg).
13. Toropunto CuEq (%) = %Cu + 0.0002 ppmMo+0.468 g/tAu+0.0073 g/tAg.
14. Emmanuel NSR formula: NSR (US\$/t) = 54.8916%Cu + 0.0132ppmMo + 27.8432g/t Au + 0.4349g/tAg.
15. Emmanuel CuEq (%) = %Cu + 0.0002 ppmMo+0.5072 g/tAu+0.0079 g/tAg.
16. Tonnages are reported as metric tonnes rounded to million tonnes, copper, gold, and silver are rounded to two decimal places, molybdenum is rounded to one decimal place.

Case Study:

Value creation in a Porphyry System - Filo Mining

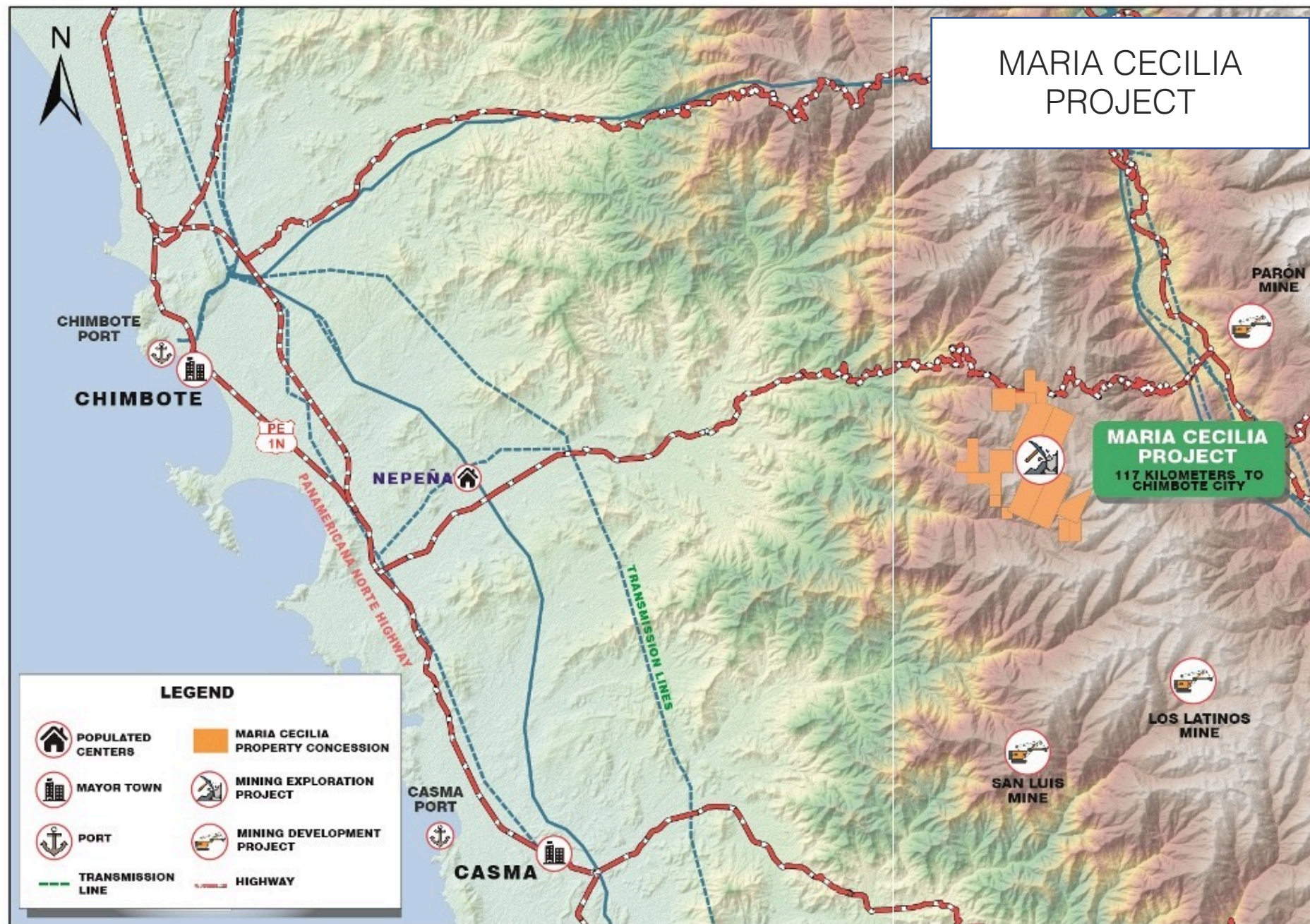
FILO CORP (TSX: FIL) MARKET CAPITALIZATION - CAD\$M



Drills 1,025m of 0.30% Copper and 0.22 g/t Gold at Filo del Sol - Demonstrating the Presence of a Significant Copper-Gold Porphyry Deposit

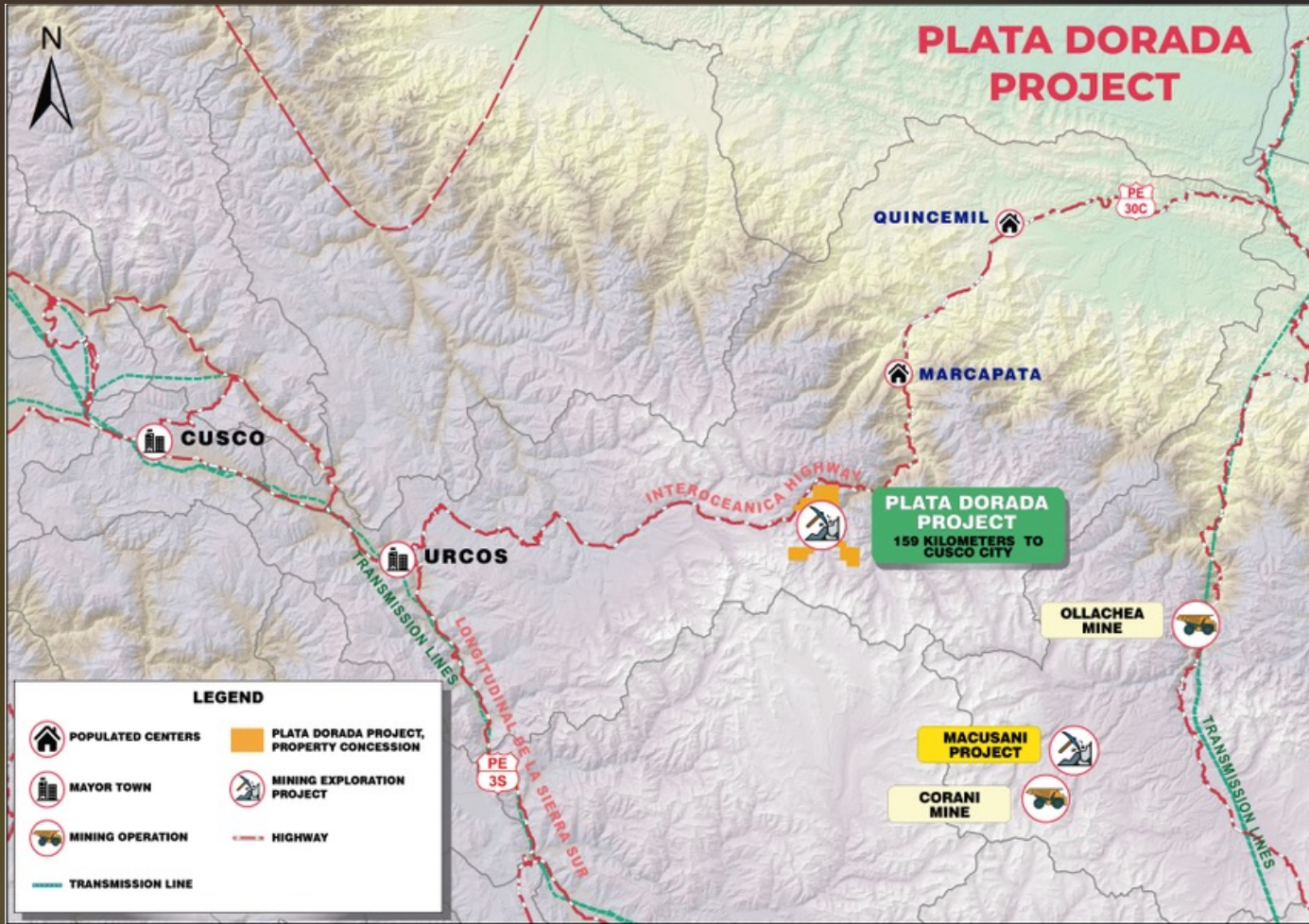
Drills 858m at 1.80% CuEq; Discovers New High-Grade Feeder Zone at Filo del Sol

Drills 1,224m at 1.26% CuEq, Extends One of the High-Grade Breccias at Filo del Sol;
C\$100 Million Strategic Investment by BHP



PLATA DORADA





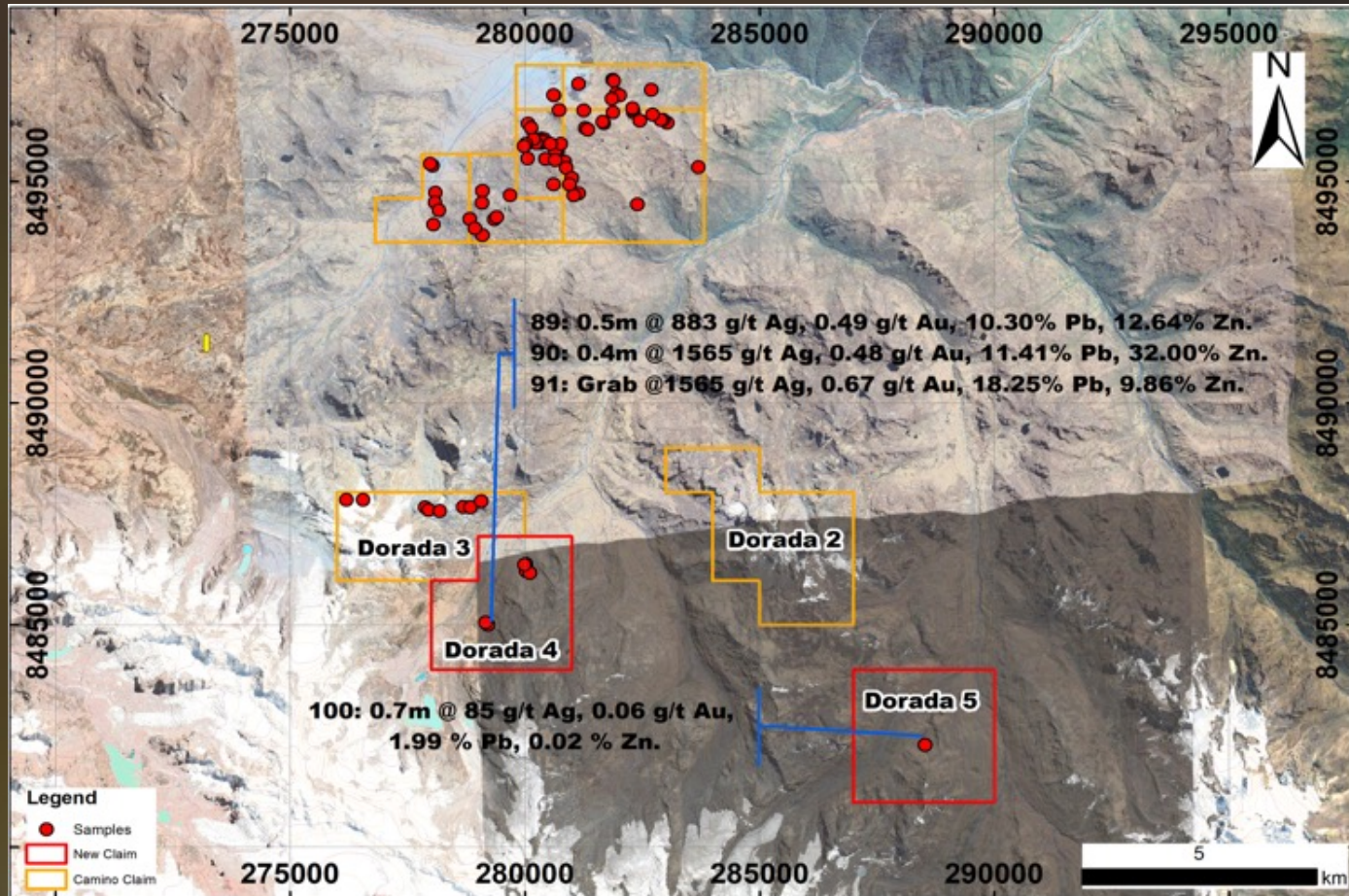
HIGH GRADE COPPER-SILVER PROJECT

100% Ownership;

Concessions totaling 3,800 Ha;

Located 158 km east of Cuzco from paved highway to Brazil;

Accessible all year round by paved highway and all-weather dirt roads.



COPPER, SILVER, GOLD, ZINC, AND LEAD

have rock chip sample grades up to 1,565 g/t silver (Ag), 0.67 g/t gold (Au), 1.19% copper (Cu), 32% zinc (Zn), and 18.25% lead (Pb)

Rock chip samples range in width from 0.2 to 2.0 m across the veins

Exploration work at Plata Dorada identified new vein structures, with over 70 channel samples tested for metal content.

Best Results of the 2020 Geochemical Sampling Campaign included 5.76% Cu and 1,500 g/t Ag.

The Company now plans to continue to develop a 1:2000 geological map and model of the vetiform structures to define exploration drill targets.



**KNOWN VEINS ARE WELL-EXPOSED.
POTENTIAL TO DISCOVER NEW VEINS ON THE PLATA DORADA PROPERTY.**





ENVIRONMENTAL AND SOCIAL GOVERNANCE



ESG ACCOUNTABILITY

In 2021, Camino Corp. has developed its Environmental and Social Governance strategy and completed its ESG disclosure submission with Digbee Ltd.'s inaugural reporting cycle. In 2022, Camino completed its second submission, with an improved grade for its Los Chapitos Project.

The annual submission requires thorough evidence-backed disclosure of the company's environmental and social practices and is reviewed and approved by the Board of Directors. This reporting process allows Camino's management to review, assess, and improve its ESG strategy and its implementation.

During the pandemic, Camino provided the local community with COVID-19 testing kits, financial support for ranchers to purchase feed for animals, and food packages for those infected with COVID-19. Camino also supplied the community of Atiquipa with 10 computer tablets and new satellite internet access.



CAMINO'S COMMITMENT



OUR COMMITMENT TO ESG

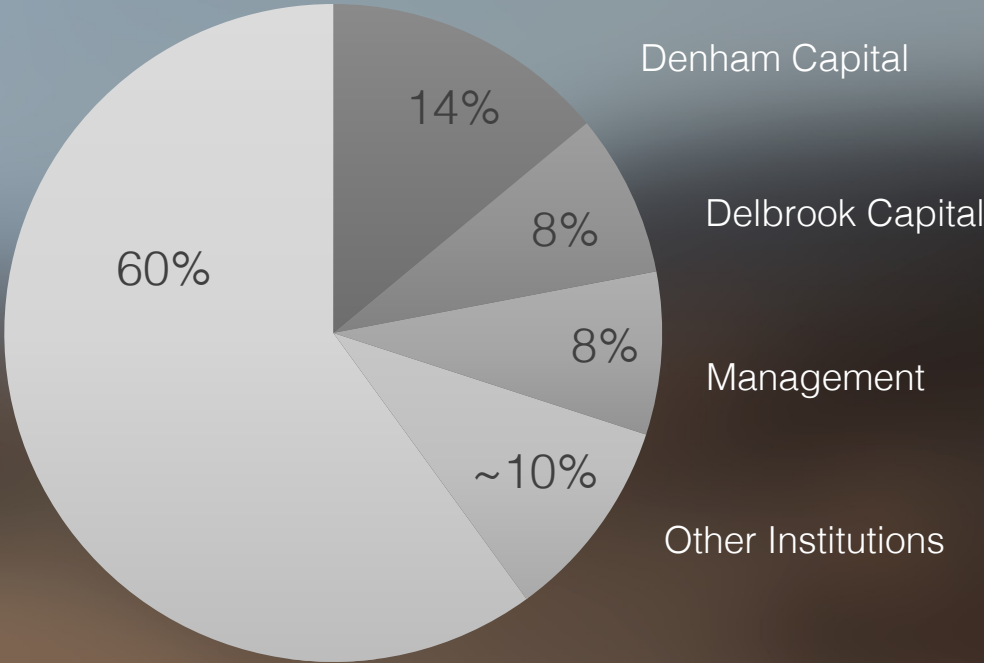
Camino Corp. is dedicated to developing our projects to bring sustainable and long-lasting social and economic benefits for the host communities and all stakeholders. We engage in meaningful consultation and honest dialogue with representatives of the communities surrounding our projects. Camino Corp. is committed to involving the local workforce and providing fair wages and equal opportunities, while minimizing potential impacts of our exploration and development activities.

SHARE STRUCTURE

July 2024

CURRENT SHARES OUTSTANDING	209,251,638
MANAGEMENT AND INSIDERS	~8%
WARRANTS (@ \$0.10 EXERCISE PRICE)	33,333,334
OPTIONS (@ \$0.15 AVERAGE EXERCISE PRICE)	16,225,000

OWNERSHIP STRUCTURE



JAY CHMELAUSKAS, BAsC Geol. Eng., MBA
CEO, President, Director

- Former CEO of start-up to production companies Jinshan Goldmines Corp. (China), now China Gold International; Rheominerals (Nevada); and developed and consolidated Western Lithium Corp. with Lithium Americas Corp. (Nevada and Argentina).
- 25 years in the chemical and mining sector reviewing, developing and financing new projects into producing assets.

KEITH PECK, BA, CBV
Chairman

- Founder of Chilean copper producer Centenario Copper Corporation
- 30-year Investment Banking history financing Large and Small Mining Companies as VP and Director RBC Dominion Securities, Haywood Securities and Vice Chairman Yorkton Securities.

KENNETH C. MCNAUGHTON, MASc, P.Eng.
Director

- One of the founders of silver producer Silver Standard SSR Mining and Pretium Resources Inc. Chief Exploration Officer at P2 Gold Inc.
- 38 years of global exploration experience.

EWAN WEBSTER, PhD, P.Geo
Director

- CEO of Thesis Gold.
- Exploration geologist with a comprehensive field, technical, and academic background.

CHRIS ADAMS
Director

- Former Senior Managing Director and head of Macquarie's mining finance business in the Americas.
- Over 30 years of mining finance experience and particular mining knowledge in the Americas. With Macquarie, he led teams to evaluate and execute on equity investments and loans to development projects around the world and marketed commodity derivatives.
- Bachelor of Commerce degree from McGill University, an MBA from Massachusetts Institute of Technology, and the CFA designation.

JUSTIN MACHIN, HBA
Director

- Director at Denham Capital, a global natural resources private equity firm with over \$10 billion of assets under management.
- Previously with Waterton Global, Standard Chartered and National Bank Financial
- 13 years of mining private equity, corporate finance and M&A experience.

DAVID BAKER
CFO

- Finance leader with over 20 years of major operational and project experience.
- Proven ability to identify, analyze, and present projects to international investors, financiers, major companies, and governments.
- Diversity of experience, extensive knowledge, and talent for attracting billion-dollar investments through presentations and driving company value.

PLAN UNIDOS:

In November of 2023 Peru has called for the implementation of 25 measures to reactivate the country's economy, with a particular focus on the mining, energy, and oil and gas sectors.

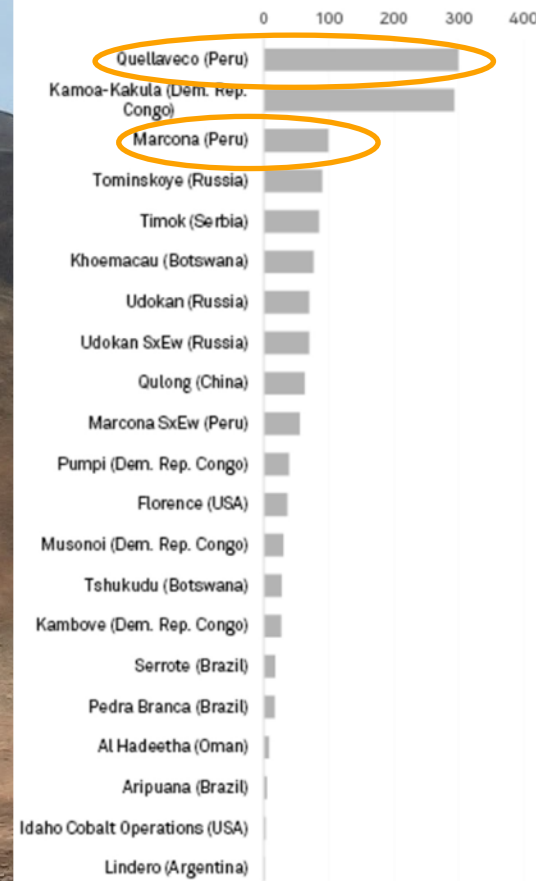
“When it comes to exploration, the goal is to optimize the environmental requirements and prior consultation processes. Regarding active mining operations, the plan is to improve occupational safety and health regulations, as well as the rules related to concession granting, making sure they respond to what is needed in a specific area or sector.”

Source: <https://www.mining.com/peru-to-implement-new-measures-in-mining-energy-sectors-to-reactivate-the-economy/>

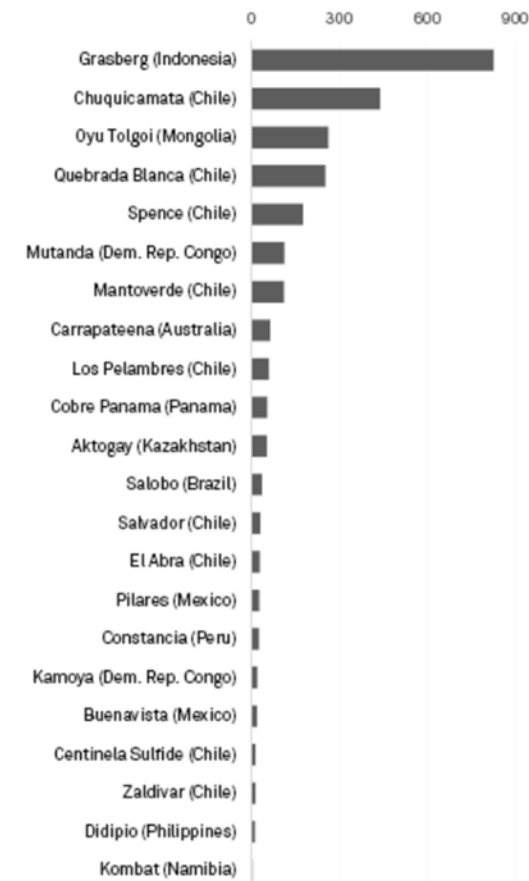


PERU IN TOP 10 NEW AND PROBABLE COPPER MINES

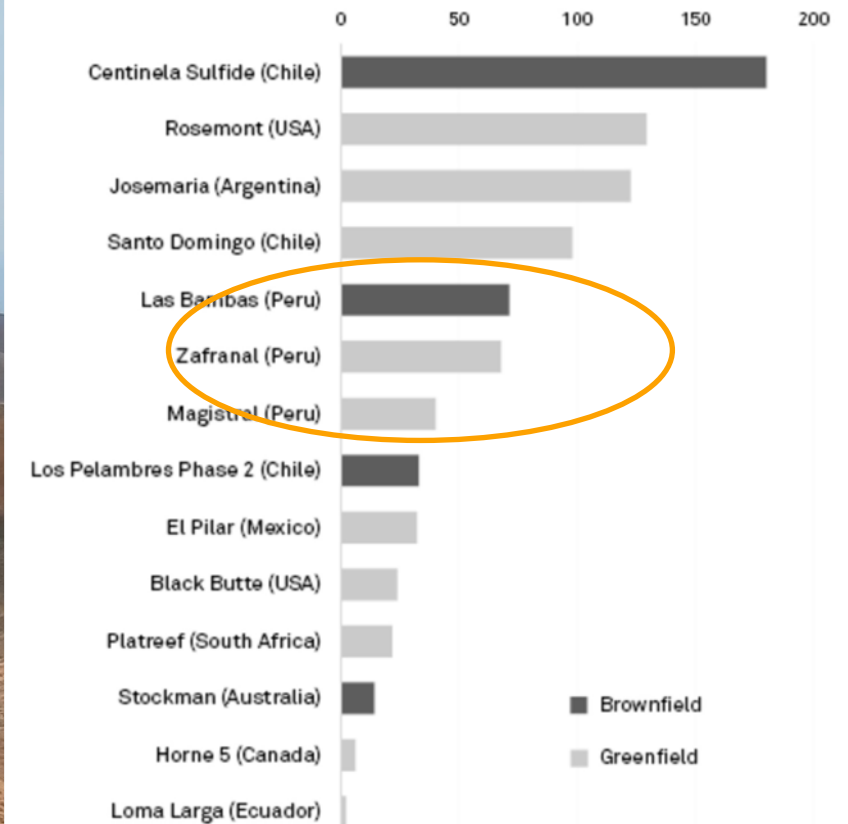
Average addition of committed greenfield projects (000 t/yr)



Average addition of committed expansion and restart projects (000 t/yr)



Average addition of probable copper projects (000 t/yr)



As of Oct. 12, 2021.
Source: S&P Global Market Intelligence

As of Oct. 12, 2021.
Source: S&P Global Market Intelligence



JAY CHMELAUSKAS BAsC, MBA
CEO, PRESIDENT & DIRECTOR
JAYC@CAMINOCORP.COM
1.604.493.2058

EXECUTIVE OFFICES
SUITE #1780, 555 W HASTINGS STREET
VANCOUVER, BC V6B 4N4, CANADA
www.caminocorp.com
info@caminocorp.com